

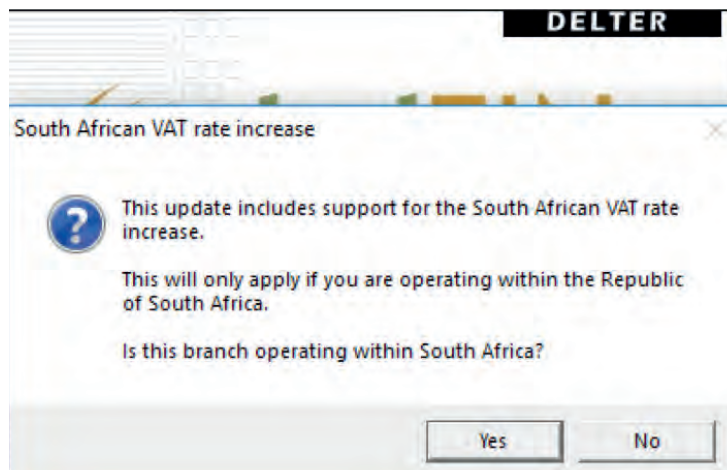
# DELFIN CHANGELOG

LATEST  
VERSION 8.80

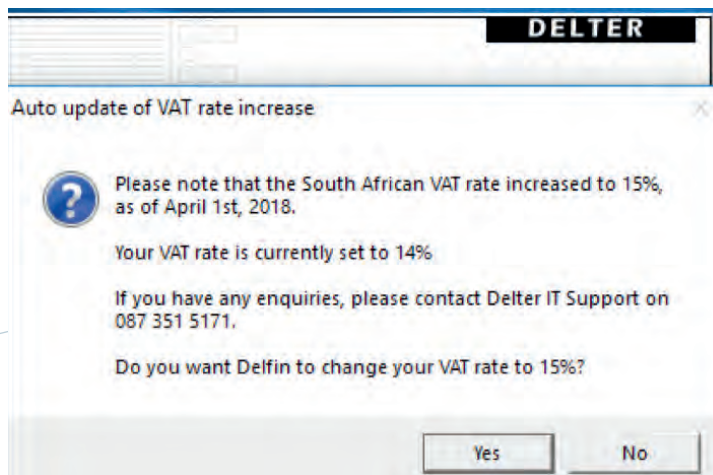
## Changes from Version 8.79

### Updates:

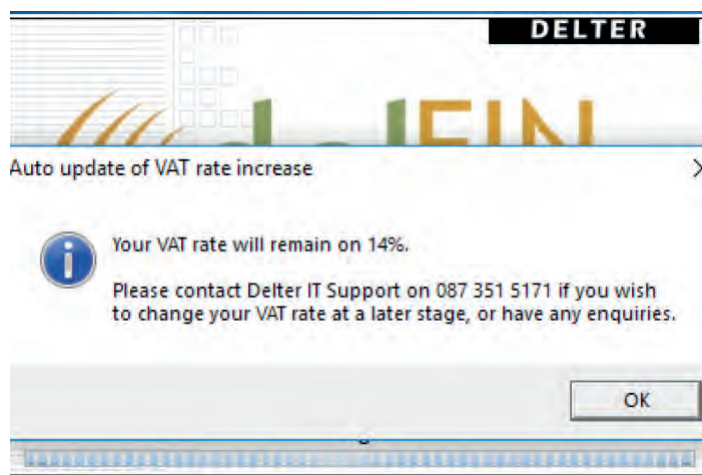
- » This update is to support the VAT rate increase as of 1st April 2018.
- » Once update takes effect, a message will pop-up on Delfin to ask the branch if they are operating within South Africa.



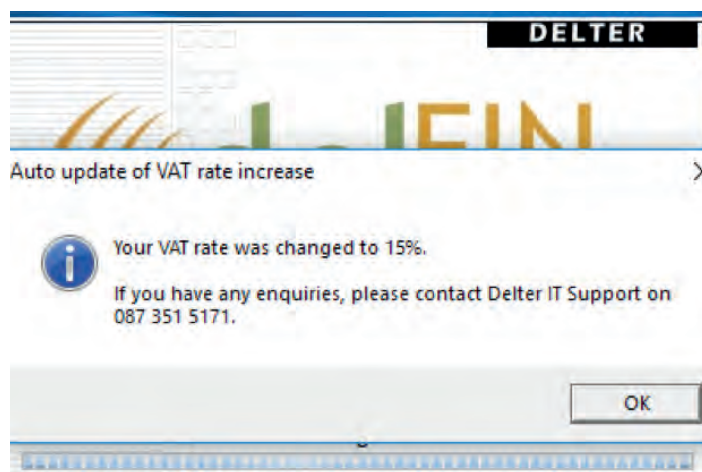
- » This message will only pop-up if the branch did not select that they were operating within South Africa with the Delfin 8.66 Update of 2016 (update to assist with the interest rate changes).
- » If the branch selects "No", then this update will not change their VAT rate to 15% on the 1st of April 2018.
- » However, if the branch selects "Yes", a series of pop-up boxes will communicate with the branch on Delfin's first login on or after the 1st of April 2018.
- » The first time Delfin gets logged into on or after 1 April 2018, a pop-up box will appear asking the user if they want Delfin to automatically change their VAT rate to 15%.



» If the user selects “No”, the VAT rate will remain unchanged.



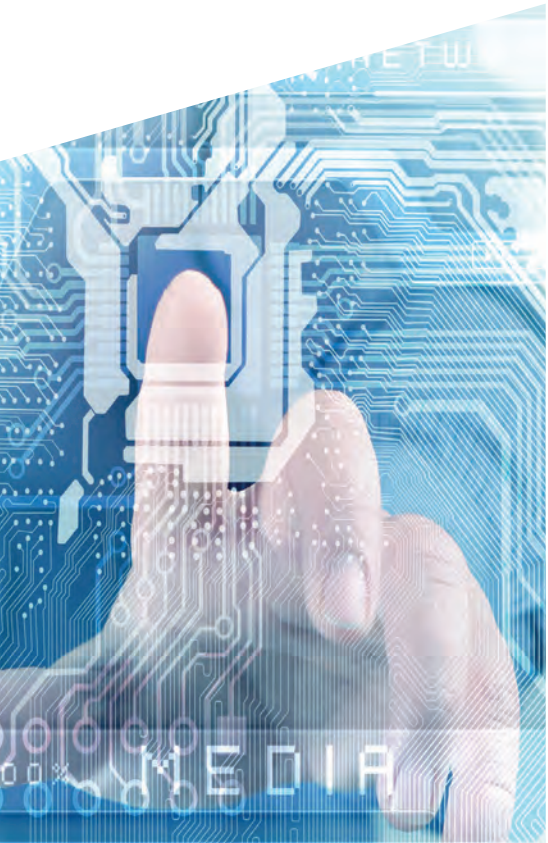
» However, if the users select “Yes”, Delfin will automatically change the VAT rate to 15%.



» Keep in mind that the pop-up boxes on or after 1st of April 2018, will only occur if the branch selected that they are operating within South Africa, and that their VAT rate is set to 14%.

» If the VAT rate is set to any different percentage it will remain unchanged.

» For more information you can consult the communication that was sent out on the 2nd of March 2018.



Contact Details

Tel: +27 12 993 3497

Email: [info@delter.co.za](mailto:info@delter.co.za)

Physical Address:

Oberon Avenue, Block D, 1st Floor,  
Glenfield Office Park,  
Faerie Glen, Pretoria, 0081

Postal Address:

P.O. Box 70361,  
Die Wilgers, 0042

[www.delter.co.za](http://www.delter.co.za)

